



# Santa Fe Art Institute

For immediate release  
April 5, 2006

Page: 1/2

Contact:  
Sheilah Wilson  
swilson@sfai.org  
(505) 424 5050

The Santa Fe Art Institute hosts Open Studios on Thursday, May 25, 5-7pm at the Santa Fe Art Institute. Open Studios are an opportunity for Artists and Writers in Residence to share what they have been making, thinking and writing during their time in residence. Introductions and readings will be held at 6pm in the SFAl lounge. May artists include Jina Valentine (Pennsylvania), Ellie Brown (Philadelphia), Mary Kavanagh (Alberta), Samina Mansuri (Toronto), Daphne Loney (New Orleans), Gyorgi Voros (Virginia), Frahn Koerner (New Orleans) and Chris Jahncke (New Orleans). The community is invited to attend this exciting chance to dialogue with contemporary art makers and writers. The event is free of charge and refreshments are provided.

Jina Valentine (Pennsylvania) is strongly committed to working on conceptual work which defies non-commercialism, style resistant object as by-product of concept and the simplicity of form and function.



Appetite for Destruction II, mixed media, 2005. Jina Valentine.

Ellie Brown (Philadelphia) will be working on her three dimensional works which incorporate the book as a sculpture. The meaning of her books is highly reliant on the conversation between the cover and revealed inside page.

Daphne Loney (New Orleans) works with the physical body and its fragility and perceptions within contemporary society. Loney deals with hospitalization and the act of stitching as both an act of preservation and creation in her sculptural works.

SANTA FE ART INSTITUTE 1600 ST.MICHAELS DRIVE, SANTA FE, NM 87505. MAIL TO: P.O.Box 24044, SANTA FE, NM 87502. T (505) 424 5050. F (505) 424 5051  
The Santa Fe Art Institute, an independent educational non-profit organization founded in 1985, is committed to programs that nurture artists and enhance and promote the arts as an essential element of American culture and society. Visit our website at [www.sfai.org](http://www.sfai.org).

# Santa Fe Art Institute

For immediate release  
April 5, 2006

Page: 2/2

Contact:  
Sheilah Wilson  
swilson@sfai.org  
(505) 424 5050

Mary Kavanagh (Alberta) has been working for the past two years on a project which involves the tracking of movement through the New Mexican landscape by artist Georgia O'Keefe. Kavanagh's practice investigates the dialectic between personal and collective memory, and between public and private systems of retrieval and archiving.



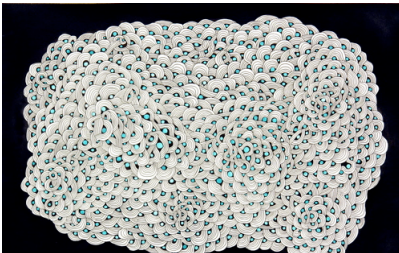
Whisper, 2005. Mary Kavanagh

Samina Mansuri (Toronto) will be working on a body of work which deals with the human body and the creation of forms of identity.

Gyorgi Voros (Virginia) will be working on two poetry manuscripts in progress; one explores the valence between geographical locations and a second which observes the making of landscape with forms dating to classical time.

Frahn Koerner (New Orleans) uses colors from the semi tropical environment of New Orleans and rhythmic patterns in Nature to inspire her paintings.

Chris Jahncke (New Orleans) is working on a body of work that references prehistory, geology and time.



Untitled, 2005. Chris Jahncke

The Santa Fe Art Institute Artist and Writer Residency program acknowledges the support of the Pollock-Krasner Foundation, Lannan Foundation, Trust for Mutual Understanding, Witter Bynner Foundation, Joan Mitchell Foundation and Writers Foundation.